

STUDIO IN ART FINAL PROJECT- ART ANALYSIS

1. Line 5pts

Use thin and thick lines to reproduce the most important parts of the composition.



2. Center of Interest / Movement 5pts

Circle the center of interest and then draw arrows the way your eye travels through the composition.



3. Positive / Negative Space 10 pts

Shade the negative space from dark to light.



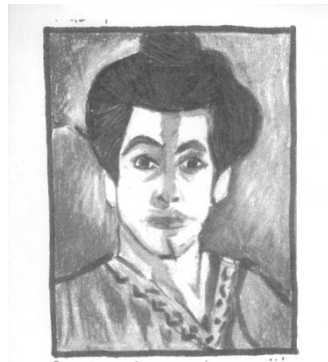
4. Texture 10pts

Choose appropriate textures to reproduce your image and texture density to indicate value.



5. Value 10 pts

Reproduce the image in grayscale. The value range should match the values in the original image.



6. Color 20 pts

Reproduce the image in color as closely as possible.

